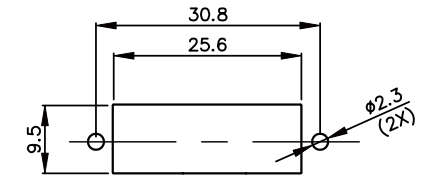
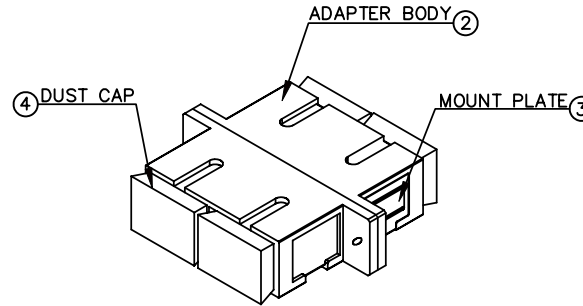
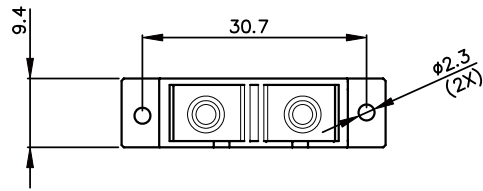
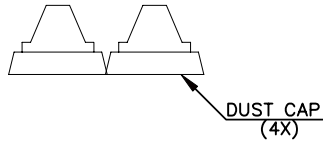
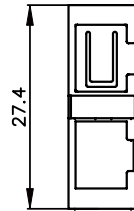
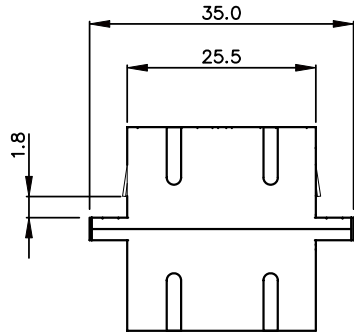


REV	DESCRIPTION	Date	APPROVED
A	PRODUCTION RELEASE	11/01/07	
B	ADD NEW PART NO.	06/15/10	

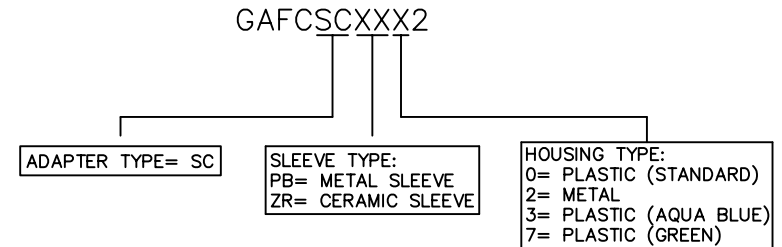


RECOMMENDED MOUNTING HOLE (PANEL THICKNESS IS 1.7MM MAX.)



- NOTES: (MM: 850nm, SM: 1310nm)
1. INSERTION LOSS: CERAMIC <=0.15dB. METAL <=0.2dB.
 2. RETENTIONS FORCE: 200~600grams.
 3. DURABILITY: 500MATING.
 4. OPERATING TEMPERATURE: -40°C~80°C.
 5. FLAMMABILITY GRADE: UL94V-0

ITEM NO.	Q'TY	TYPE	Q'TY	TYPE	COLOR	Q'TY	TYPE	Q'TY	COLOR
GAF CSCZR72	1	CERAMIC	1	PLASTIC	GREEN	1	STAINLESS STEEL	2	GREEN
GAF CSCZR32	1	CERAMIC	1	PLASTIC	AQUA BLUE	1	STAINLESS STEEL	2	AQUA BLUE
GAF CSCZR22	1	CERAMIC	1	METAL HOUSING WITH NICKEL PLATING		1	STAINLESS STEEL	2	BLUE
GAF CSCZR02	1	CERAMIC	1	PLASTIC	BLUE	1	STAINLESS STEEL	2	BLUE
GAF CSCPB32	1	METAL	1	PLASTIC	AQUA BLUE	1	STAINLESS STEEL	2	AQUA BLUE
GAF CSCPB22	1	METAL	1	METAL HOUSING WITH NICKEL PLATING		1	STAINLESS STEEL	2	BEIGE
GAF CSCPB02	1	METAL	1	PLASTIC	BEIGE	1	STAINLESS STEEL	2	BEIGE
BOM		① SLEEVE		② BODY		③ MOUNT PLATE		④ DUST CAP	



UNLESS OTHERWISE SPECIFIED DIMENSION TOLERANCES ARE		CABLESYS					
DECIMALS	ANGULAR	14700 E ALONDR A BLVD, LA MIRADA, CA 90638		WWW.CABLESYS.COM			
.X	+/- .050	SC ADAPTER DUPLEX					
.XX	+/- .010						
.XXX	+/- .005						
DO NOT SCALE DRAWING							
DESIGNER	D.R.	SIZE	A	FILE NO.	OFF. SHELF CABLE\FIBER\GAF CSCXXX2	REV.	B
DRAFTSMAN	H.W.	UNIT	MM	PAGE NO.	1/1	ITEM NO.	GAF CSCXXX2
APPROVED BY		SCALE	NTS	DATE	11/01/07	DWG NO.	FCSCXXX2

Approved by: _____ Title: _____ Date: _____