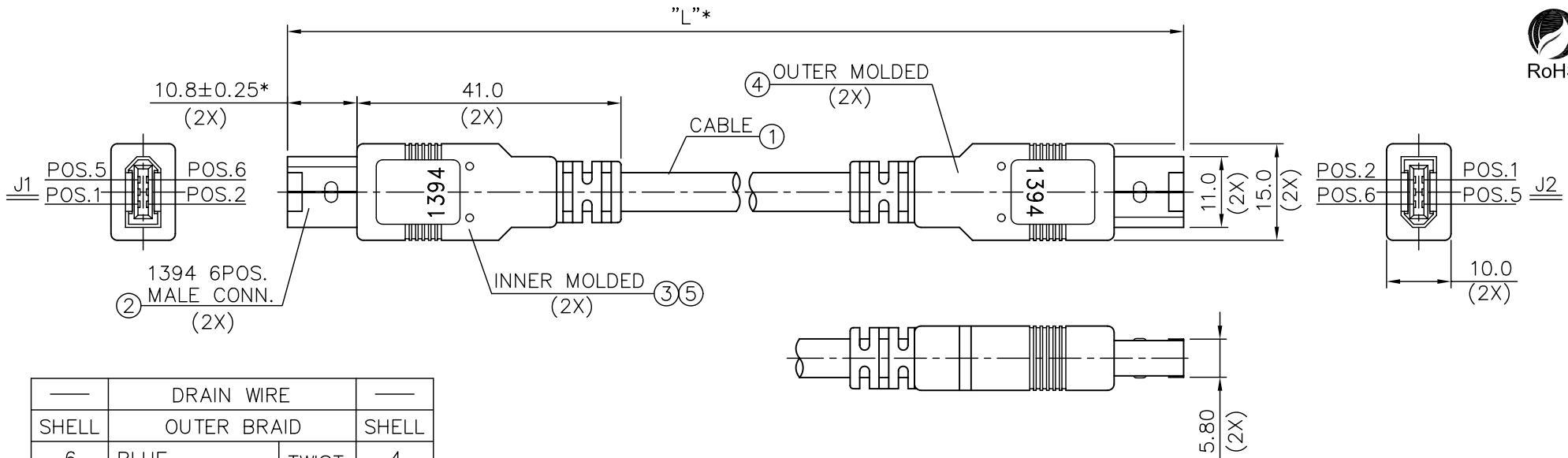


REV	DESCRIPTION	Date	APPROVED
A	PRODUCTION RELEASE	11/03/03	
B	MODIFY WIRING	11/14/03	



DRAIN WIRE		SHELL	
SHELL	OUTER BRAID	SHELL	
6	BLUE	TWIST PAIR	4
5	ORANGE	TWIST PAIR	3
4	GREEN	TWIST PAIR	6
3	RED	TWIST PAIR	5
2	INNER BRAID (2X) BLACK (22AWG)		2
1	WHITE (22AWG)		1
J1	WIRE COLOR		J2

WIRE CONNECTION TABLE (B)

GC43811005	5000.0±76.2
GC43811003	3000.0±50.8
GC43811002	2000.0±50.8
GC43811001	1000.0±38.1
PART NO.	"L"*

5	H.S. TUBE	2PCS	I.D=Ø5.0MM, L=10.0MM, COLOR: BLACK, UL224
		2PCS	I.D=Ø2.0MM, L=13.0MM, COLOR: BLACK, UL224
4	OUTER MOLDED	12gm	PVC, SHORE A: 85±3, UL94V-0 COLOR: BLACK(600-BLK-001)
3	INNER MOLDED	6gm	PE, FOR MOLDED, COLOR: NATURAL
2	1394 6POS. MALE CONN.	2SET	CONTACT: COPPER ALLOY, 30u" GOLD PLATED INSULATOR: WHITE, UL94V-0 SHIELD CASE: GOLD PLATED
1	IEEE 1394 CABLE	1PC	(#28X1P+AL./MYLAR+BRAID COVERAGE: 65% MIN.) x2+#22x2C+DRAIN WIRE+POLYESTER+AL./MYLAR +BRAID COVERAGE: 95% MIN.+JACKET: PVC O.D=Ø6.1±0.1MM, UL20276 COLOR: BLACK(600-BLK-001)
NO.	ITEM	Q'TY	DESCRIPTION

NOTES:

1. ALL DIMENSIONS ARE "MM".
2. ANY OPEN, MISWIRING, SHORT & INTERMITTENT ARE NOT PERMITTED.
3. CIRRS 1000H OR EQUIVALENT CABLE TESTER USING FOLLOWING PARAMETERS:
300V DC, 50MΩ 10mS MIN. & 2.0Ω MAX.

UNLESS OTHERWISE SPECIFIED
DIMENSION TOLERANCES ARE

DECIMALS	ANGULAR
.X +/- .050	+/- 0.5
.XX +/- .010	
.XXX +/- .005	

DO NOT SCALE DRAWING

CABLESYS

14700 E ALONDRA BLVD, LA MIRADA, CA 90638

WWW.CABLESYS.COM

1394 FIRE WIRE 6P TO 6P W/GOLD PLATED SHELLS

Approved by: _____ Title: _____ Date: _____

DESIGNER	T.L.	SIZE	A	FILE/NO/LOCATION\OFF SHELF CABLE\GC43811XXX	REV. B
DRAFTSMAN	U.P.	UNIT	MM	PAGE NO. 1/1	ITEM NO. GC43811XXX
APPROVED BY		SCALE	NTS	DATE 11/03/03	DWG NO. 43811XXX