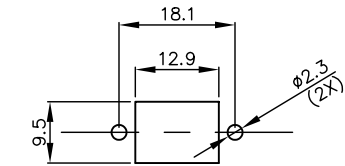
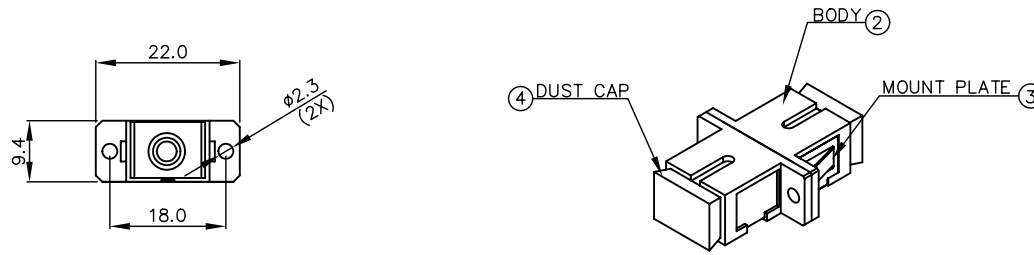
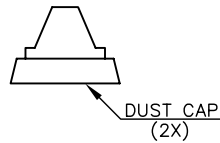
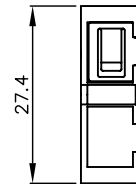
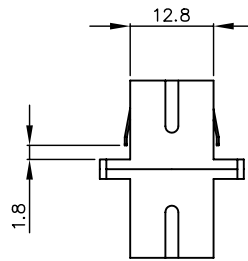


REV	DESCRIPTION	Date	APPROVED
A	PRODUCTION RELEASE	11/01/07	



RECOMMENDED MOUNTING HOLE (PANEL THICKNESS IS 1.7MM MAX.)



- NOTES: (MM: 850nm, SM: 1310nm)
1. INSERTION LOSS: CERAMIC <=0.15dB, METAL <=0.2dB.
 2. RETENTIONS FORCE: 200~600grams.
 3. DURABILITY: 500MATING.
 4. OPERATING TEMPERATURE: -40°C~80°C.
 5. FLAMMABILITY GRADE: UL94V-0

GAF CSCXXX1

ADAPTER TYPE= SC

SLEEVE TYPE:
PB= METAL SLEEVE
ZR= CERAMIC SLEEVE

HOUSING TYPE:
0= PLASTIC (STANDARD)
2= METAL
3= PLASTIC (AQUA BLUE)

GAF CSCZR31	1	CERAMIC	1	PLASTIC	AQUA BLUE	1	STAINLESS STEEL	2	AQUA BLUE		
GAF CSCZR21	1	CERAMIC	1	METAL HOUSING WITH NICKEL PLATING		1	STAINLESS STEEL	2	BLUE		
GAF CSCZR01	1	CERAMIC	1	PLASTIC	BLUE	1	STAINLESS STEEL	2	BLUE		
GAF CSCPB31	1	METAL	1	PLASTIC	AQUA BLUE	1	STAINLESS STEEL	2	AQUA BLUE		
GAF CSCPB21	1	METAL	1	METAL HOUSING WITH NICKEL PLATING		1	STAINLESS STEEL	2	BEIGE		
GAF CSCPB01	1	METAL	1	PLASTIC	BEIGE	1	STAINLESS STEEL	2	BEIGE		
ITEM NO.	Q'TY	TYPE		COLOR		Q'TY	TYPE		Q'TY	COLOR	
BOM	① SLEEVE		② BODY			③ MOUNT PLATE		④ DUST CAP			

UNLESS OTHERWISE SPECIFIED DIMENSION TOLERANCES ARE

DECIMALS ANGULAR
.X +/- .050 +/- 0.5
.XX +/- .010
.XXX +/- .005

DO NOT SCALE DRAWING

CABLESYS

14700 E ALONDRA BLVD, LA MIRADA, CA 90638

WWW.CABLESYS.COM

SC ADAPTER SIMPLEX

DESIGNER	D.R.	SIZE	A	FILE NO.	OFFSHELF CABLE\FIBER\GAF CSCXXX1	REV.	A
DRAFTSMAN	H.W.	UNIT	MM	PAGE NO.	1/1	ITEM NO.	GAF CSCXXX1
APPROVED BY		SCALE	NTS	DATE	11/01/07	DWG NO.	FCSCXXX1

Approved by: _____ Title: _____ Date: _____