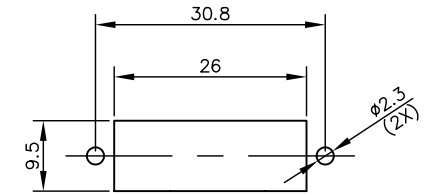
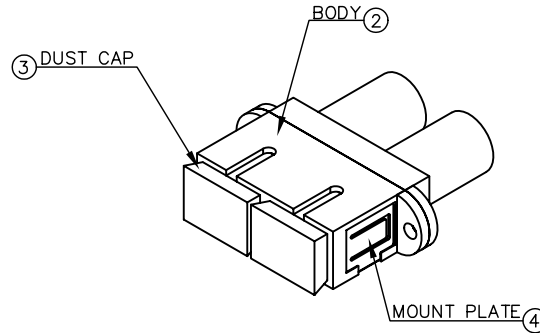
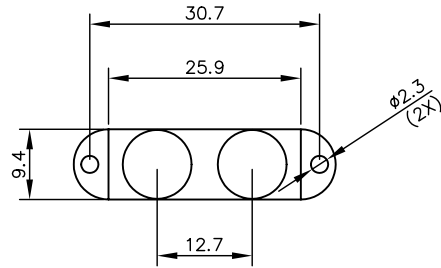
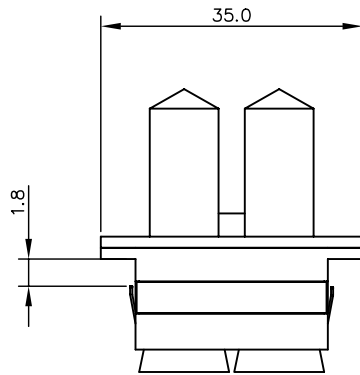


REV	DESCRIPTION	Date	APPROVED
A	PRODUCTION RELEASE	11/06/07	



RECOMMENDED MOUNTING HOLE
(PANEL THICKNESS IS 1.7MM MAX.)



NOTES: (@850nm~1310nm)

1. INSERTION LOSS: CERAMIC <=0.15dB, METAL <=0.2dB.
2. RETENTIONS FORCE: 200~600grams.
3. DURABILITY: 500MATING.
4. OPERATING TEMPERATURE: -40°C~80°C.
5. FLAMMABILITY GRADE: UL94V-0.



GAFCTCXXX2

ADAPTER TYPE= ST/SC HYBRID

SLEEVE TYPE:
PB= METAL SLEEVE
ZR= CERAMIC SLEEVE

HOUSING TYPE:
0= PLASTIC (STANDARD)
2= METAL

GAFCTCZR22	1	CERAMIC	1	METAL HOUSING WITH NICKEL PLATING	1	STAINLESS STEEL	2	BLUE+YELLOW		
GAFCTCZR02	1	CERAMIC	1	PLASTIC BLUE	1	STAINLESS STEEL	2	BLUE+YELLOW		
GAFCTCPB22	1	METAL	1	METAL HOUSING WITH NICKEL PLATING	1	STAINLESS STEEL	2	BEIGE+BLACK		
GAFCTCPB02	1	METAL	1	PLASTIC BEIGE	1	STAINLESS STEEL	2	BEIGE+BLACK		
ITEM NO.	Q'TY	TYPE	Q'TY	TYPE	COLOR	Q'TY	TYPE	Q'TY	COLOR	
BOM	①	SLEEVE		②	BODY		③	MOUNT PLATE	④	DUST CAP

UNLESS OTHERWISE SPECIFIED
DIMENSION TOLERANCES ARE

DECIMALS ANGULAR
.X +/- .050 +/- 0.5
.XX +/- .010
.XXX +/- .005

CABLESYS

14700 E ALONDRA BLVD, LA MIRADA, CA 90638

WWW.CABLESYS.COM

ST/SC DUPLEX, ADAPTER

DO NOT SCALE DRAWING

DESIGNER	ANT.	SIZE	A	FILE NO.	OFF SHELF CABLE\FIBER\GAFCTCXXX2	REV.	A
DRAFTSMAN	H.W.	UNIT	MM	PAGE NO.	1/1	ITEM NO.	GAFCTCXXX2
APPROVED BY		SCALE	NTS	DATE	11/06/07	DWG NO.	FCTCXXX2

Approved by: _____ Title: _____ Date: _____