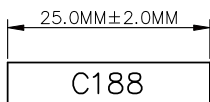
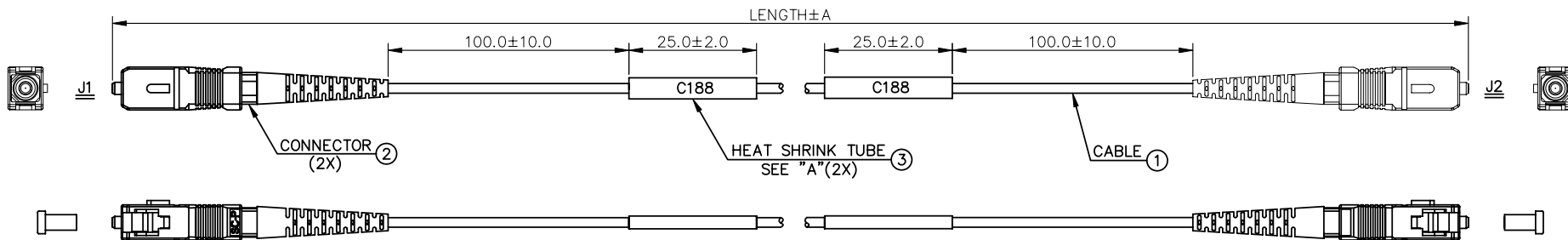


REV	DESCRIPTION	Date	APPROVED
A	PRODUCTION RELEASE	04/04/07	
B	MODIFY SPEC.	05/07/09	



DETAIL "A"

TOLERANCE

6~**	0.15
3~5	0.10
2	0.05
0.6~1	0.04
0~0.5	0.03
LENGTH(M)	A(M)

GCFA1CCS**-M	**
GCFA1CCS01-M	1
CABLESYS P/N	LENGTH (M)

NOTE: "**": 01,02,03...

Ⓑ NOTES:

1. NEW PRODUCTS SHALL BE REFERENCE TO BELLCORE GR-326 STANDARD.
2. INSERTION LOSS: <=0.2dB TYPICAL (1300nm) 0.3dB MAX.
3. RETURN LOSS: >=55dB (1310nm)

3	HEAT SHRINK TUBE	2PCS	COLOR=BLACK.
2	CONNECTOR	2PCS	SC, SIMPLEX, SINGLE-MODE, BLUE COUPLING & BOOT
1	CABLE	1PC	OPTICAL FIBER, SINGLE-MODE, 9/125, SIMPLEX, Ø2.0MM, TIGHT, YELLOW, PVC JACKET.
NO.	ITEM	Q'TY	DESCRIPTION

UNLESS OTHERWISE SPECIFIED DIMENSION TOLERANCES ARE

DECIMALS	ANGULAR
.X +/- .050	+/- 0.5
.XX +/- .010	
.XXX +/- .005	

DO NOT SCALE DRAWING

CABLESYS

14700 E ALONDRA BLVD, LA MIRADA, CA 90638

WWW.CABLESYS.COM

FIBER JUMPER
SINGLEMODE SIMPLEX SC TO SC

DESIGNER	A.C.	SIZE	A	FILE NO.	OFF SHELF CABLE\FIBER\GCFA1CCSXX-M	REV.	B
DRAFTSMAN	N.T.	UNIT	MM	PAGE NO.	1/1	ITEM NO.	GCFA1CCSXX-M
APPROVED BY		SCALE	NTS	DATE	04/04/07	DWG NO.	FA1CCSXX-M

Approved by: _____ Title: _____ Date: _____