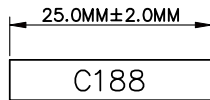
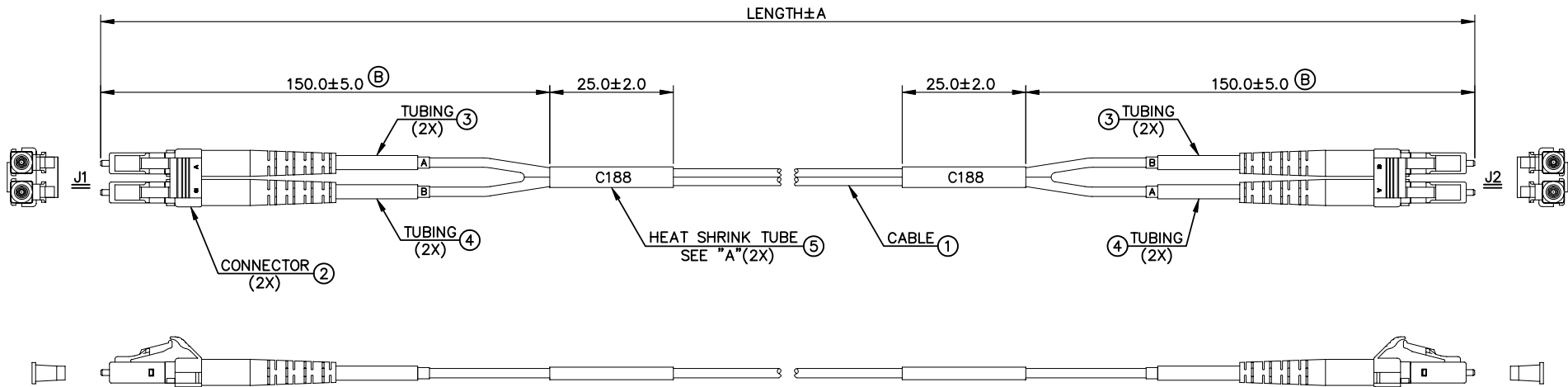


REV	DESCRIPTION	Date	APPROVED
A	PRODUCTION RELEASE	05/01/07	
B	MODIFY LENGTH	08/21/09	
C	MODIFY CABLE DESCRIPTION	09/10/10	



DETAIL "A"

TOLERANCE

6~**	0.15
3~5	0.10
2	0.05
0.6~1	0.04
0~0.5	0.03
LENGTH(M)	A(M)

GCFGZLLL**-M	**
GCFGZLLL01-M	1
CABLESYS P/N	LENGTH (M)

B	A
A	B
J1	J2
WIRE COLOR	
WIRE CONNECTION	

NOTE: "***": 01,02,03...

NOTES:

1. NEW PRODUCTS SHALL BE REFERENCE TO BELLCORE GR-326 STANDARD.
2. INSERTION LOSS: <=0.2dB TYPICAL (1300nm)

5	HEAT SHRINK TUBE	2PCS	COLOR=BLACK.
4	TUBING	2PCS	HEAT SHRINK SLEEVE, WHITE.
3	TUBING	2PCS	HEAT SHRINK SLEEVE, YELLOW.
2	CONNECTOR	2PCS	LC, DUPLEX, MULTI-MODE, BEIGE HOUSING & CLIP, WHITE BOOTS
1	CABLE	1PC	OPTICAL FIBER, MULTI-MODE, OM3, 50/125, DUPLEX, Ø1.8MM TIGHT, AQUA BLUE, PVC JACKET.
NO.	ITEM	Q'TY	DESCRIPTION

UNLESS OTHERWISE SPECIFIED DIMENSION TOLERANCES ARE

DECIMALS	ANGULAR
.X +/- .050	+/- 0.5
.XX +/- .010	
.XXX +/- .005	

DO NOT SCALE DRAWING

CABLESYS

14700 E ALONDRA BLVD, LA MIRADA, CA 90638 WWW.CABLESYS.COM

FIBER JUMPER 50/125um MULTIMODE
DUPLEX LC TO LC OM3 Ø1.8

DESIGNER	A.C.	SIZE	A	FILE NO.	OFF SHELF CABLE\FIBER\GCFGZLLLXX-M	REV.	C
DRAFTSMAN	H.W.	UNIT	MM	PAGE NO.	1/1	ITEM NO.	GCFGZLLLXX-M
APPROVED BY		SCALE	NTS	DATE	05/01/07	DWG NO.	FGZLLLXX-M

Approved by: _____ Title: _____ Date: _____