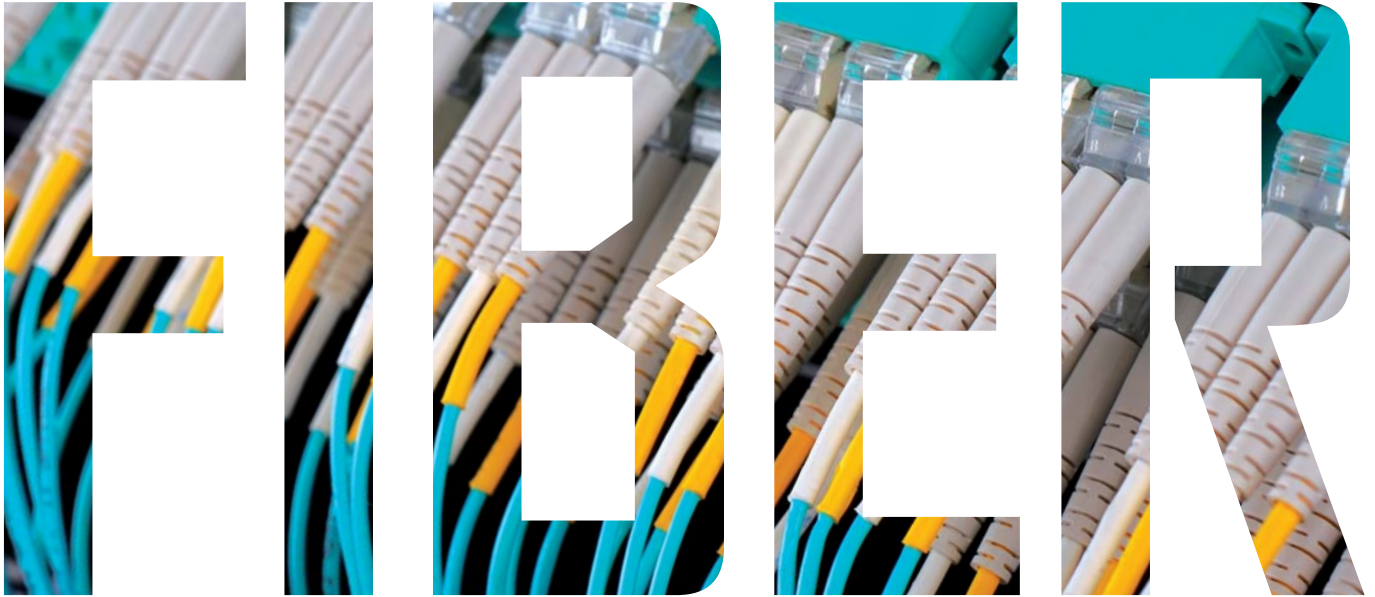
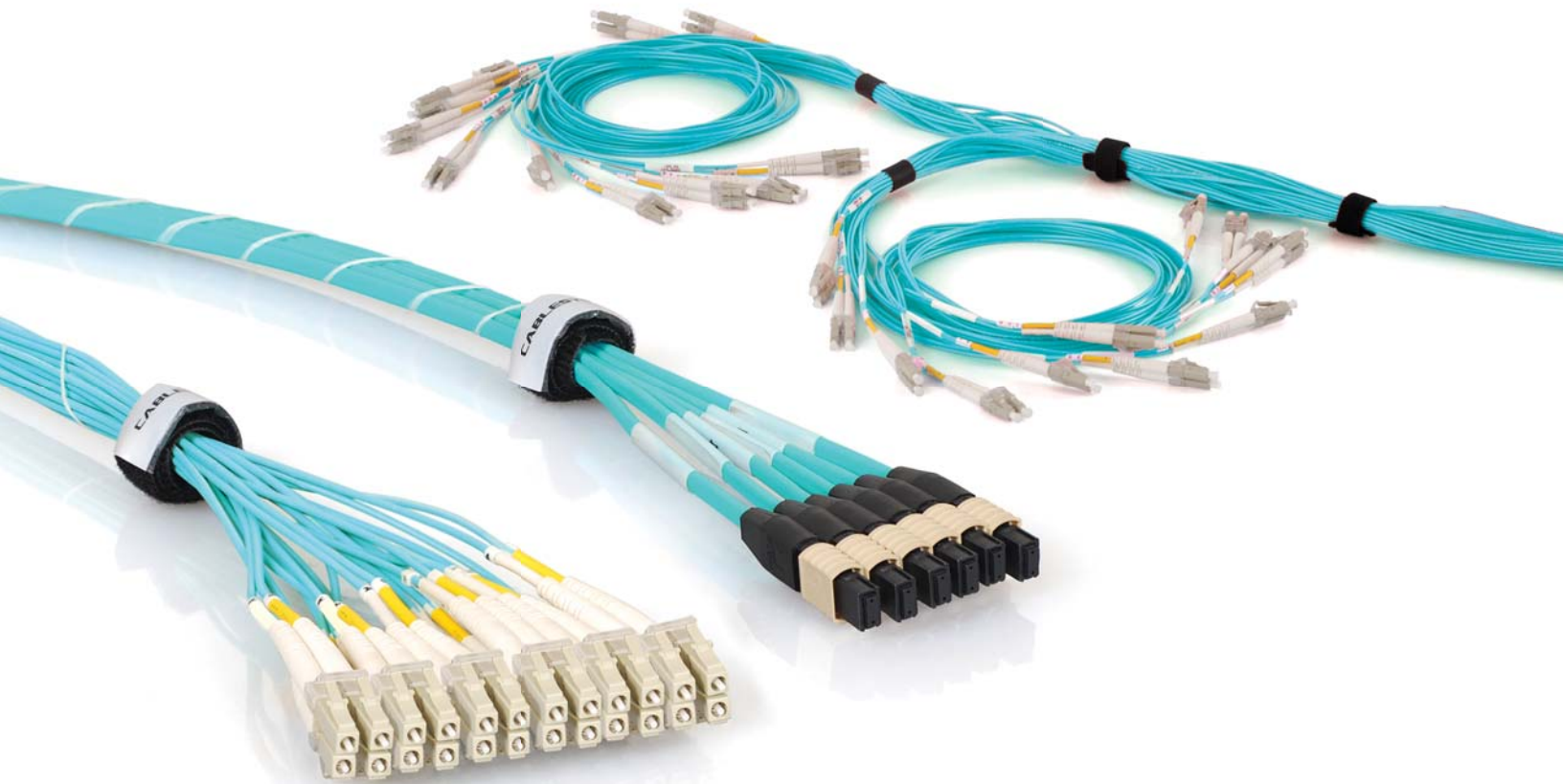

HIGH DENSITY



10G • 40G • 100G



CABLESYS[®]

Ordering Guide

Datacenters across the globe are fast reaching their space limits and rising costs are forcing businesses to rethink their data center strategy. So how should you continue IT deployment and drive growth? Simple. Implement HD fiber optic connectivity.

Fiber Jumpers and Backbone

Part No.

GCF (1)(2)(3)(4) L (zz)



1 Fiber Jacket Type

G	10G, OFNR (Simplex, Duplex, Ribbon)
R	10G, OFNP (Simplex, Duplex, Ribbon)
J	10G, OFNR (Distribution)
K	10G, OFNP (Distribution)

2 Fiber Count

1	Single Fiber Cable
P	4 Multi-fiber
Q	6 Multi-fiber
R	8 Multi-fiber
S	12 Multi-fiber
T	24 Multi-fiber
Z	Dual Fiber Zip Cord

3 4 First and Second Terminal

L	LC Connector
P	MPD Connector
Y	MPD Connector with Pins*

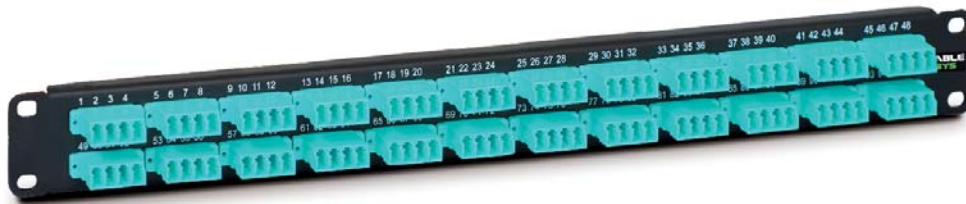
*For MPD Adapter Panel applications

(zz) Length of Cable (meters)

LC-	01, 02, 03, 04, 05, 07, 08, 10, 11, 12, 13, 14, 15, 20, 25
MPD-	5, 10, 15, 20, 35, 50

(Also available in custom lengths)

HD Connectivity



Part No.

GHFPLCPB34
GHFMPMP8832
GHFCLCPB34
GHFCMP8832
GHFCLCGD24
GHFPFC8803

Type

LC Quad Patch Panel
MPD Patch Panel
LC Quad Adapter Panel
MPD Adapter Panel
LC Quad MPD Cassette
Blank Panel

Description

19" Panel loaded with 24 LC Quad Adapters, 1 RMS*
19" Panel loaded with 24 MPD Adapters, 1 RMS*
Adapter Panel loaded with 6 LC Quad Adapters
Adapter Panel loaded with 6 MPD Adapters
10G, 50/125µm (OM3) Cassettes with 6 LC Quad Adapters
19" Panel with 3 Openings for Adapter Panels and Cassettes, 1 RMS*
*1 RMS (Rack Mount Space) = ±25" L75"

Fibers

96
Up to 576
24
Up to 144
24
Up to 432

Custom Assembly



Fiber trunk cables can be combined and customized with patch panels, Adapter Panels and MPD cassettes according to your needs. Custom labeling, bundling, and breakout lengths are available. Call for pricing.

Fiber Jumpers

- Supports 10G/40G/100G broadband applications
- Performs at distances of up to 300 meters (OM3) or 550 meters (OM4)
- Factory terminated, no need for splicing or polishing
- Optically inspected and performance tested, results included
- Complies and exceeds IEEE, IEC, and TIA industry standards

LC Pre-Terminated Jumpers

LC fiber jumpers are designed with small-form-factor connectors offering twice the port density compared to traditional fiber connectors. They have become very popular throughout the telecom industry and are the standard choice for high-density fiber systems. They are made from OM3 riser-rated cables and come in simplex and duplex configurations. LC jumpers are designed with a latch clip that secures connections and resists pulls and strains during installation.

- Simplex and duplex
- Supports 10G fiber systems
- OM3/OM4
- 50/125µm laser optimized multimode OM3 riser-rated cable
- Low insertion loss of <0.3dB
- Custom lengths are available

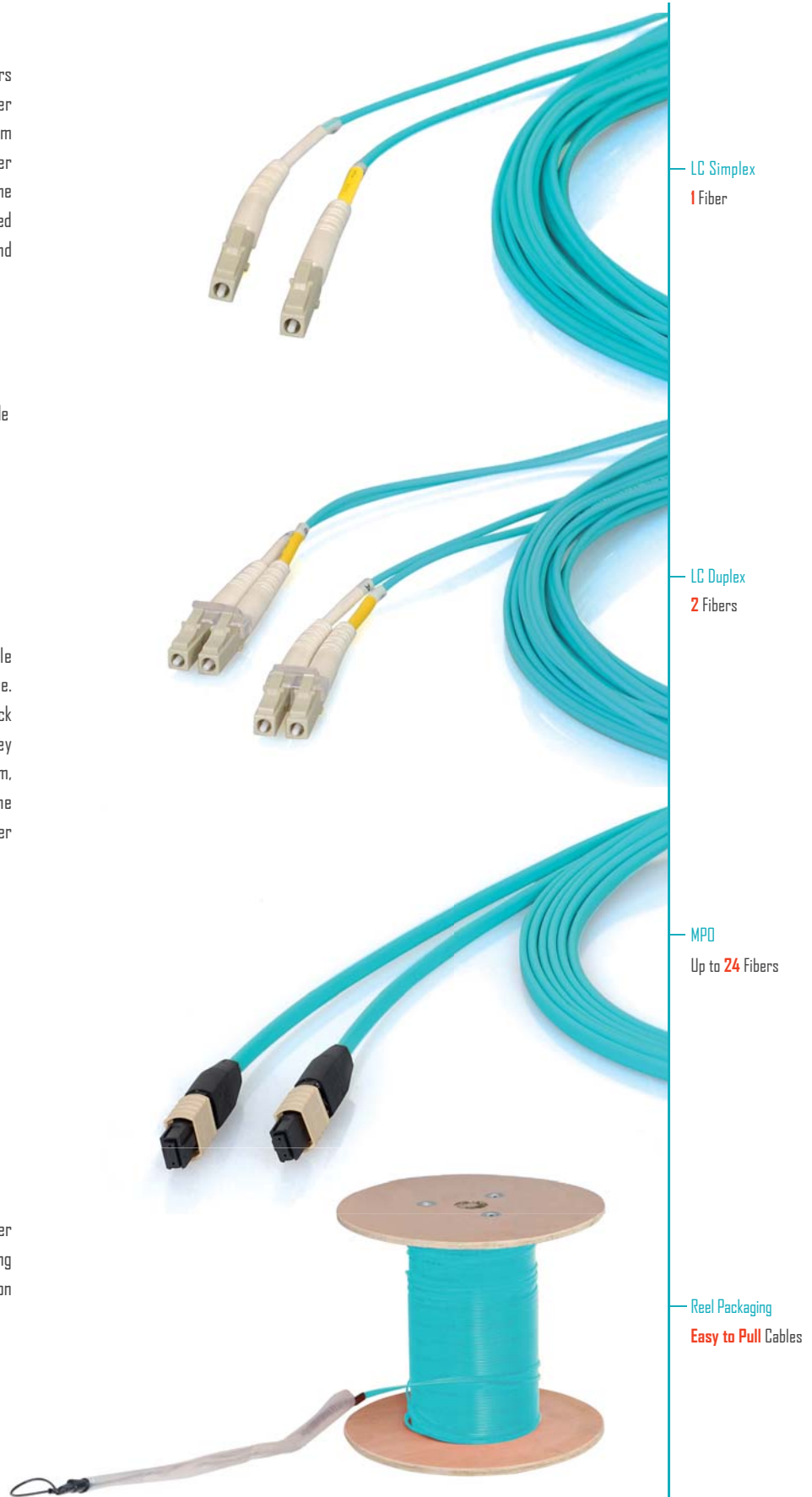
MPO Pre-Terminated Jumpers

MPO (Multi-fiber Push On) fiber jumper is a single cable comprised of ribbon-fibers that are ultra-small and durable. Their compact design increases fiber density within one rack mount space and decreases fiber management space. They are designed with a push-on/pull-off insertion release mechanism, providing consistent and repeatable interconnections. The precision molded MT ferrules and housings ensure perfect fiber alignment when installed.

- Speeds migration to 40G/100G fiber systems
- Low-loss premium MPO connectors
- OM3/OM4
- 50/125µm laser optimized multimode OM3 or OM4 cable
- Custom lengths are available

Protective Packaging

An optional pulling eye can be packaged with your bundled fiber cables to protect the terminated fiber connector ends during installation. Long length assemblies are individually packaged on a reel allowing fast and easy pulling.



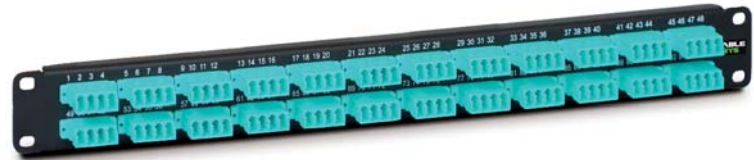
HD Connectivity

- For server farms, datacenters, and optical interconnect applications
- Maximizes extreme density output in limited space
- Supports densities of up to 576 fibers within one rack space
- Decreases fiber management space used within data racks
- Engineered and designed for precision fiber alignment

HD Patch Panels

HD fiber patch panels are designed to mount onto standard 19" racks and offer the highest fiber connectivity within one rack mount space allowing maximum space usage. Get up to 96 fibers on one LC Patch Panel and up to 576 fibers on one MPO Patch Panel. Fiber patch panels are constructed of 16 gauge steel and incorporate numeric silk screening for easy port identification.

- 96 Fiber LC Quad Patch Panel
- MPO Patch Panel (up to 576 fibers)
- Tough 16 Gauge steel panel, powder-coated black
- Numeric silk-screening for easy port identification
- 19" EIA rack mount width, 1 rack mount space



LC Quad
96 Fibers



MPO
Up to 576 Fibers

HD Adapter Panels

HD fiber adapter panels provide a flexible solution. They are designed with push pins allowing them to be easily installed and removed from blank patch panels for quick moves, adds and changes. Get up to 432 fibers using three MPO Adapter Panels or 72 fibers using three LC Adapter Panels mounted in one Blank Patch Panel.

- 24 Fiber LC Quad Adapter Panel
- MPO Adapter Panel (up to 144 fibers)
- Powder-coated black
- Blank Panel sold separately



MPO
Up to 144 Fibers

LC Quad
24 Fibers

HD MPO Cassettes

For HD Plug and Play infrastructures; use HD fiber MPO cassettes. We have designed six LC Quad Adapters supporting 24 fiber connections on the front of the cassette with an internal cable assembly which converts to two female 12 fiber MPO connectors on the rear. This enables you to utilize MPO trunk cables within the backbone infrastructure for faster deployment. Cassettes are designed with push pins, allowing them to be easily interchanged. They come pre-tested, ready for immediate use.

- 24 Fiber LC Quad MPO Cassette
- Optically inspected and performance tested, results included
- Numeric silk-screening for easy port identification
- Blank Panel sold separately



LC Quad
24 Fibers

Fiber Backbone

- Multi-strand, trunk and tailored cabling solutions
- For rapid deployment reducing installation time up to 75%
- Ensures efficient use of pathway space
- Built and bundled in any length, size and configuration
- Optically inspected and performance tested, results included

Multi-strand Cables

Multi-strand fiber cables offer a high degree of flexibility and customization. Multiple fiber jumpers are bundled together allowing for faster installation and reducing the number of individual fiber runs. The bundled cables can be separated, making it easy to manage and modify.

- Multi-stands allow for faster installation
- Reduces the number of fiber runs
- OM3/OM4
- Custom breakout lengths and configurations
- Pre-labeling is available for easy system administration

Trunk Cables

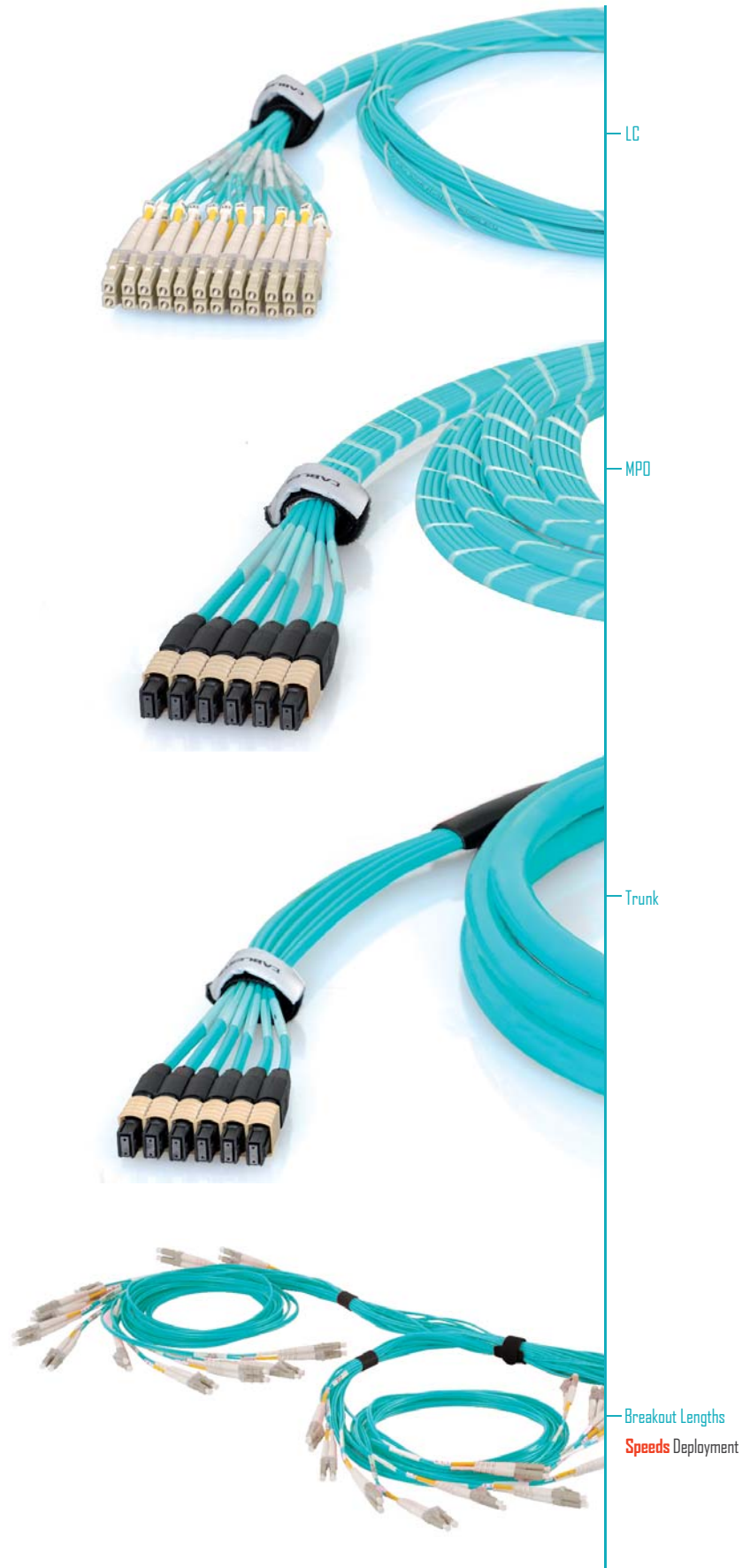
Trunk fiber cables offer high density interconnections in the smallest package available today. Multi-fiber assemblies are built with a single protective jacket for up to 30% less weight and cross-sectional area. This makes it easy to pull a large number of fibers through a small channel. Plus, installations look aesthetically clean and organized.

- Constructed to reduce size and weight
- Allows more fiber to go through a small channel
- OM3/OM4
- Custom breakout lengths and configurations
- Pre-labeling is available for easy system administration

Tailored Cable Configurations

Utilizing our in-house design and engineering resources in combination with our manufacturing resources, we are proud to offer tailored cable configurations. We can build fiber optic cables in any length, size and breakout length. We have years of expertise specifying designs with quick turnaround production. We ship neatly wrapped pre-bundled and pre-labeled cables. Just lay the bundles and you're done.

- Minimizes waste
- Speeds up deployment
- Lowers installation cost
- Optimizes cable management



HD FIBER SOLUTIONS



10G • 40G • 100G

- HD fiber panels: **reduce space**, and **maximize output**
- Pre-built fiber cables: any **length, size**, and **configuration**
- Pre-terminate, **bundle, label**, and **kit** to project needs
- Speed up your next **fiber project implementation**

800.555.7176

cablesys.com

cs@cablesys.com